

## Bocada Enterprise 5.0 for DPM 2007

Ensuring that business-critical data is protected and recoverable in the event of a failure or interruption is a key challenge for IT departments. This challenge is all the more formidable in complex heterogeneous environments experiencing exponential growth of data. Most organizations struggle to ensure recoverability and compliance due to the fundamental lack of visibility into data protection operations across the enterprise.

Many of the world's largest enterprises have overcome these challenges with Bocada Enterprise 5. The industry's leading data-protection management application delivers a comprehensive view of data protection activities, assuring that key data assets are recoverable. Enterprises can improve data protection success, enhance services delivery, reduce risk, prove compliance with regulations and significantly reduce overall data protection costs

The **Bocada Enterprise for DPM 2007** plug-in adds automated report generation and troubleshooting functionality for Microsoft System Center Data Protection Manager 2007 implementations.

Administrators can view DPM 2007 activity across multiple servers from one centralized location. In-depth reports help ensure data recoverability and effective resource use throughout the DPM 2007 environment.

The visibility and insight provided by Bocada Enterprise 5 and the DPM 2007 plug-in enables IT organizations to reach operational excellence by:

- Consistently improving backup system performance
- Enabling timely, successful data recovery
- Maximizing under-utilized systems and refining processes
- Satisfying regulatory compliance and audit requirements
- Reducing risk
- Communicating results across the enterprise
- Lowering TCO

### Achieve Superior Data Protection for Microsoft Workloads

Focused on the primary Microsoft server workloads, DPM 2007 was specifically built to protect and recover SQL Server, Microsoft Exchange Server, SharePoint® Portal Server, Microsoft Virtual Server, as well as the Windows file system. In addition, DPM 2007 blends the best aspects of continuous data protection (CDP) with traditional tape backup.

DPM 2007 continuously protects the core Microsoft server workloads to a DPM server or appliance, which then provides disk-based recovery and tape-based, long-term archival storage for a complete data protection and recovery solution.

By utilizing Bocada Enterprise DPM 2007 in conjunction with this solution SQL DBAs, Exchange Administrators, SharePoint Administrators and Backup Administrators will be able to:

- Analyze Exchange, SQL and SharePoint protection activities
- View end to end data protection activities across multiple servers
- Spot systemic errors – isolate and troubleshoot root causes
- Track activity/loads on each server
- Publish activity reports to end users
- Automatically publish compliance, capacity and success reports to multiple stakeholders
- Evaluate and plan for additional resource allocation
- Lower overall administrative costs

### Reporting Across the Enterprise

While Microsoft DPM 2007 is the data protection solution of choice for Microsoft workloads, most organizations will use a combination of data protection applications across their heterogeneous IT environment including DPM 2007 and backup applications for tape recovery and archive purposes.

Bocada Enterprise Enables administrators view end to end data protection activity across the entire enterprise.

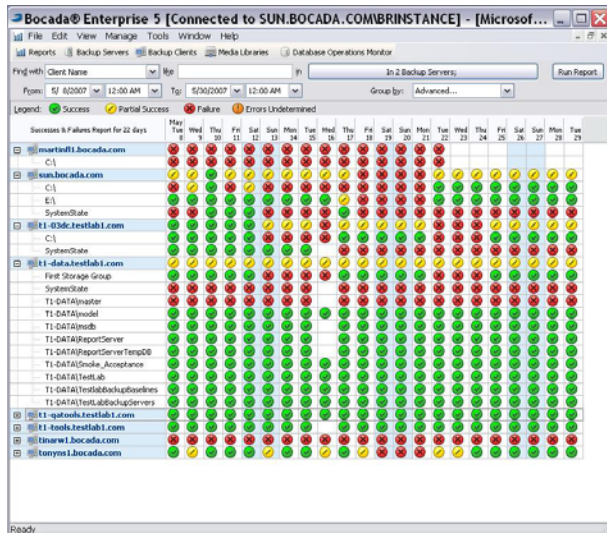
Bocada Enterprise 5 provides insight to and validates data protection results across all major data protection applications, technologies and platforms while meeting the rigorous scalability requirements of very large enterprises.

Reports can be viewed across the enterprise environment by multiple "zone" configurations including by application (ex: Exchange, SQL, SharePoint), department, campus or region. Problems protecting workloads can be isolated to the specific application when multiple solutions are in use. Users can view the amount of capacity required to protect certain workloads across both disk and tape, helping in planning, resource allocation and chargeback activities.

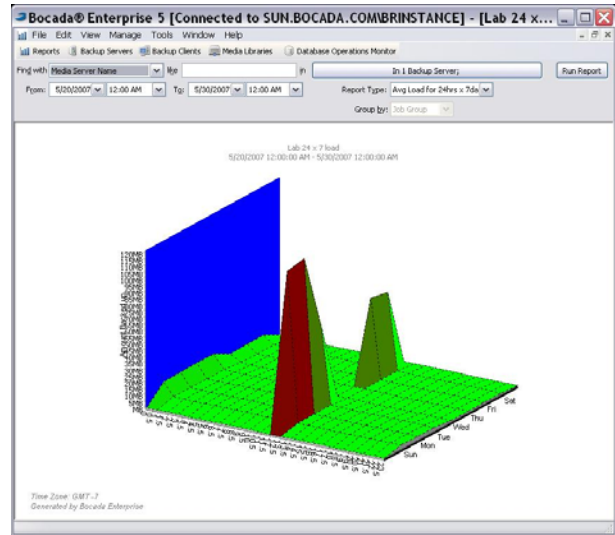
In addition to Microsoft DPM 2007, Bocada Enterprise currently supports CA ARCserve, Symantec NetBackup, Backup Exec, PureDisk; EMC NetWorker, IBM, TSM, and HP Data Protector.

### Bocada DPM 2007 Features

- Centralized reports
- Multiple consoles
- Web publishing of reports to users



*Successes & Failures Report*



*24x7 Load Report*

### Bocada Enterprise 5 Benefits your entire enterprise

Drawing from its rich set of standard and customized reports, users gain a complete view of backup and data protection operations enterprise-wide. Bocada Enterprise 5 enables relevant, timely communication of data protection reliability, cost and compliance to stakeholders across the enterprise.

### Better planning for Senior Management

- Demonstrates performance against benchmark policy requirements
- Improves capital efficiency through increased asset utilization and system throughput
- Supports disclosure to shareholders and external regulators on the recoverability of corporate assets
- Documents resource use and future requirements for enterprise-level planning
- Complete control for IT and Storage Managers
- Provides a comprehensive view of data protection assets and activity across the enterprise
- Demonstrates performance against SLAs
- Lowers data protection costs substantially by optimizing the performance of staff and existing resources
- Tracks the consumption of backup resources by business unit so costs can be allocated accordingly
- Enables forecasting of resource requirements for planning and budget justification

## Audit trail for Compliance Officers

- Provides an auditable record of all current and historical backup and data protection activity
  - Delivers objective reporting on data protection operations, regardless of platforms, OS, or architecture
  - Substantially reduces the burden and time associated with measuring and validating policy compliance
- Peace of mind for Data Owners
- Confirms data protection is meeting SLA criteria and ensures recoverability
  - Objectively documents consumption of data protection services and their corresponding costs

## Workflow benefits for DBA, Exchange, SharePoint and Backup Administrators

- Automates collection of log files and error reports
- Identifies systemic problems
- Shifts the focus from firefighting to improving the backup environment and developing sound practices around service level objectives
- Reports enable better communication with management and end users

---

Take a look at how DPM 2007 and Bocada Enterprise for DPM 2007 can protect your Windows Server® infrastructure

If you depend on Microsoft Server-based platforms, including SQL Server or Microsoft Exchange, to manage and deliver information within your company, and you face the scaling challenges of a large or heterogeneous data protection enterprise, take a look at how DPM 2007 and Bocada Enterprise for DPM 2007 can help you protect your business critical data.

To learn more about how DPM 2007 and Enterprise for DPM 2007 can help you protect your Windows Server environment, go to: [www.microsoft.com/DPM](http://www.microsoft.com/DPM)