

Bocada Enterprise 5

Bocada® Enterprise 5 is the latest version of the award-winning data protection management software from Bocada.

Bocada Enterprise 5 provides the IT and data protection team the information necessary to continuously advance the effectiveness of data protection operations.

Bocada Enterprise 5 and the Bocada Data Protection Management Path to Excellence™ (DPM P2E™) methodology help organizations ensure data recoverability, improve services delivery, reduce risk and significantly lower overall data protection costs.

The Bocada DPM P2E is based on the best practices of enterprise data protection teams at some of the world's leading enterprises. This five phase approach guides the IT department through initial data protection assessments, policy development, services delivery and risk management to achieve operational excellence using Bocada Enterprise.

The visibility and insight provided by Bocada Enterprise 5 and the DPM P2E enables IT organizations to reach operational excellence by:

- Consistently improving backup system performance
- Enabling timely, successful data recovery
- Maximizing under-utilized systems and refining processes
- Satisfying regulatory compliance and audit requirements
- Reducing risk
- Communicating results across the enterprise
- Lowering TCO

New Features in Bocada Enterprise 5

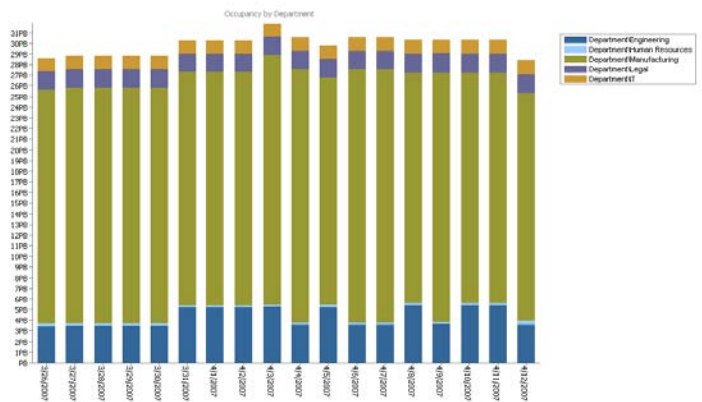
Occupancy Reporting

Bocada Enterprise 5 provides unique insight into the total data stored on media and uncovers costly backup policies. Bocada Enterprise occupancy reporting provides a previously very difficult-to-obtain view of how total storage is changing over time. By tracking overall occupancy over time, organizations can measure the impacts of the major cost drivers in backup:

- How much data is being backed up?
- How frequently are backups performed?
- How many copies of the data are made?
- How long is the data kept?
- How much data is stored per server, client, job group or media pool?

These reports enable cost analysis and reduction:

- Identify the most costly backup clients or backup policies in the environment (shown by total data on media)
- Accurately predict the cost of changes to backup configuration, such as increased retention periods
- View trends over time and see the immediate effects of policy changes
- Plan for future growth by viewing changes in storage requirements over time
- Enable accurate use based charge-back models



Occupancy Reports assist in developing a best practice charge back by natively accounting for the largest cost drivers in data protection.

Drive and Library Reporting

Organizations have invested millions of dollars in libraries and tape drives, but in the past have had very little visibility into the utilization and optimization of those assets. Bocada Enterprise 5 allows customers to easily address complex issues.

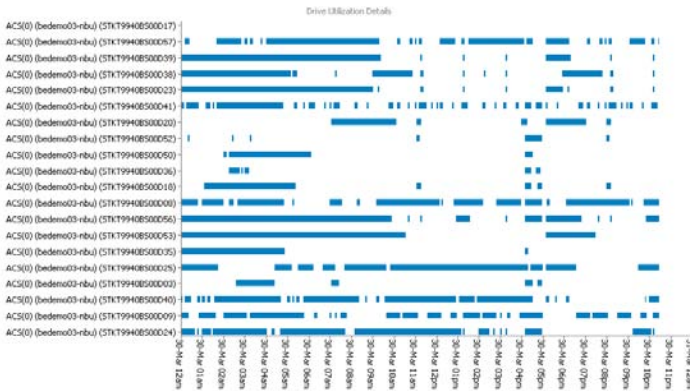
- Are there load balancing opportunities across libraries?
- Are there under-utilized assets that could be leveraged more effectively?
- Is the library utilization rate within acceptable limits?
- How are utilization rates changing over time?
- Do we need to purchase additional capacity or are there underutilized assets in-house?

The new drive and library reporting features in Bocada Enterprise 5 enable users to maximize the efficiency of their drive and library resources by seeing clearly how much of the available drive resources are in use. Reports and uses include:

- Peak drive utilization trends;
 - High level trend report reveals the overall level of utilization and pinpoints ways to balance loads more evenly across libraries
- Detailed drive utilization:
 - Shows usage patterns for each drive in a library to identify underutilized resources

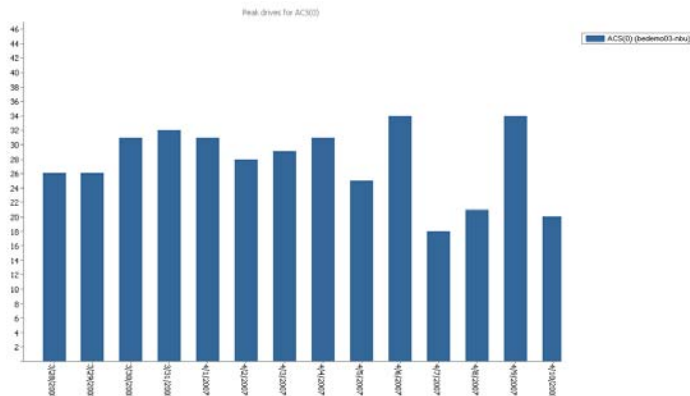
These reports present valuable, consolidated information that exposes opportunities for cost containment and performance enhancement:

- Identify underutilized library resources and reduce capital expenditures
- Identify libraries that are approaching maximum capacity
- Building a compelling business case for management for library-related hardware purchases (e.g. additional drives)

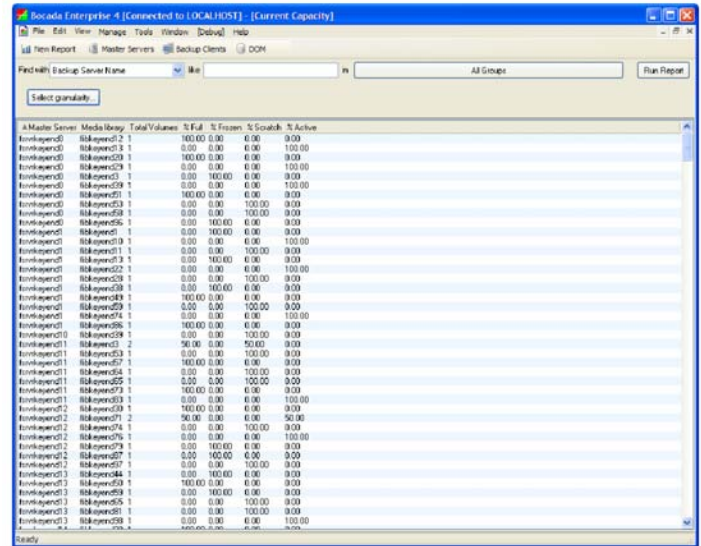


The Library Drive Utilization report—By getting views of drives in use over time, storage managers can locate opportunities for load balancing.

The reports can be grouped by drive, drive group, media servers or job groups.



The Peak Drive Utilization report shows a high level view of drive utilization that allows storage teams to measure current capacity, predict future hardware needs, and load balance across libraries.

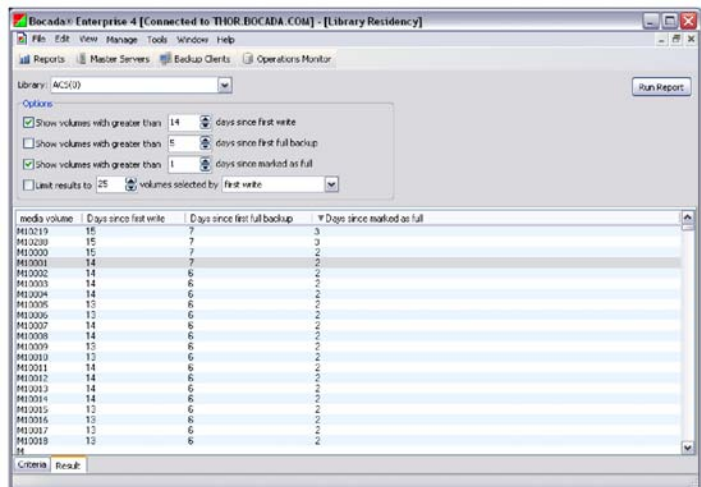


The Current Capacity report tracks the status of media volumes in a given library, data center or the entire environment.

Library Residency Reporting

A set of new Library Residency reports helps identify volumes that need to be ejected and shipped offsite to comply with the organization's regulatory and BC/DR policies. Using Bocada Enterprise 5, data protection managers can:

- Reduce risk and ensure recoverability by creating an accurate “pull” list for out-of-policy media by:
 - seeing how long each individual tape has been in the library since the first write
 - determining how long since the first full backup on each tape
 - confirming time elapsed since the tape was filled
- Determine if data is exposed by assessing how long data has been kept in the library since the first backup
- Quickly identify the best tapes to eject if additional capacity is needed

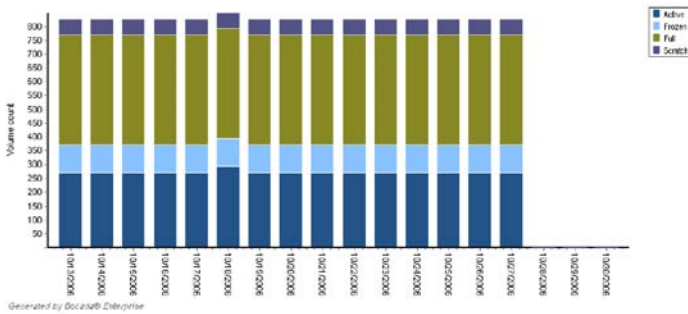


A Library Residency report allows you to create an accurate pull list to reduce risk and exposure for tapes that have remained in the library past the parameters set by the DR plan.

Media Capacity and Health

Most storage teams struggle to get sufficient insight into their usage of media. Meanwhile, expenditures for these resources often far surpass expenditures on backup software. Bocada Enterprise 5 helps reduce media costs by providing insight into the overall status of the media estate, helping ensure there are sufficient media resources for immediate needs, and assisting with capacity planning and tracking volume life spans. With Bocada Enterprise 5, you can:

- Identify current available capacity by viewing the number of media volumes that are appendable, full or in a suspect read-only condition (frozen)
- Verify that each master/media server has sufficient media resources to perform the next round of backups



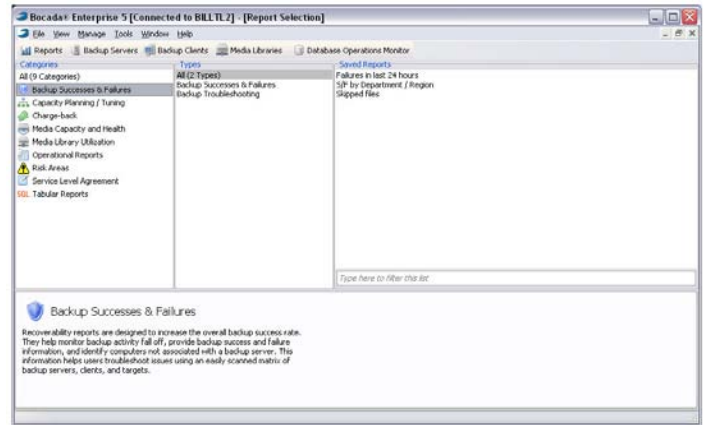
A *Media Status Trend report* shows media by status—scratch, active, full or frozen—to help understand the overall health of the media volumes at a given data center or library.

GUI Enhancements

Bocada Enterprise 5 has a new look featuring an easy-to-use tri-pane browser with numerous standard reports organized into eight categories:

- Backup Successes & Failures
- Capacity Planning/Tuning
- Charge-back
- Media Capacity and Health
- Media Library Utilization
- Operational Reports
- Risk Areas
- Service Level Agreements
- Tabular Reports

As you scroll through categories, an expanding menu shows the standard reports in each area. For larger environments that develop numerous customized reports, an on-the-fly text search function quickly locates stored reports to allow storage managers to find, run and then publish results quickly and easily.



Updated Report Selection screen offers a tri-pane 'browse' for reports, text search, compact report previews and a description pane

Reports can be exported out as images (charts), HTML tables, or as CSV files for simple integration into other reporting programs or posting to an intranet. These same reports and formats can be published out to the web to provide easy access to the information to data owners, executive management or clients.



Enhancements to the Successes & Failures Reports include accessible icons, flyovers, and color coding for weekends that makes the reports easy to skim for the most relevant information.

Product Highlights

Bocada Enterprise 5

Bocada Enterprise 5 provides unique insight into the total data stored on media and uncovers costly backup policies. Bocada Enterprise occupancy reporting provides a previously very difficult-to-obtain view of the number media images that are valid targets for restores—instead of simply providing information on the total storage at a point in time.

- Provides vital performance insight on all major data protection applications, systems and platforms
- Scales to meet the demands of the massive enterprise, regardless of geography or network topology
- Installs effortlessly—agent less design means rapid deployment and low TCO
- Offers flexible, automated web distribution of information
- Supports full access to stored data via open schema for customization of queries, tools and integration with other systems

Benefits by title

| What's in it for you? | Backup administrators: | IT and Storage Managers: | For Senior Management: |
|----------------------------|--|---|--|
| Efficiency, employee hours | Prioritize your day around solving, rather than just finding the problems. | Use IT administrator time for higher level tasks. | Delay or eliminate need for additional IT head count. |
| Capacity planning | Track trends in data growth by department, applications etc. | Plan for future requirements by using growth and other trend metrics to document resource use. | Document resource use, show growth trends to support budget and project requests. |
| Complexity/heterogeneity | Immediately get one view of information across all backup systems for troubleshooting planning, reporting. | Get one consistent, reliable enterprise-wide view of backup activity. | Get one consistent, reliable, enterprise-wide view of backup activity. |
| Compliance | Create and track compliance performance against compliance requirements. | Track trends and prove compliance with reports. | Use reports to prove compliance to auditors, regulators. |
| Ease of deployment | Agent less architecture means swift, trouble free deployment. | Agent less architecture means low change management impact, low network performance impact. | Swift deployment means that staff time is not wasted in getting software "up to speed." |
| Minimize risk (data loss) | Assure data recoverability. | Minimize risk and exposure from lost data. | Minimize risk and exposure to enterprise from lost data; reduce or eliminate costs associated with re-creation of lost data; avoid regulatory fines for lost data. |
| Proof of performance | Quickly meet audit requests by generating reports showing backup activities success and failure, etc. Improve data owner confidence in data protection services. | Prove backup performance against SLAs and other requirements. | Easily provide an auditable record of backup activity for public disclosure regarding security of corporate assets to shareholders and external regulators. |
| Reduce costs | Use employee time and storage resources more efficiently. | Manage resources more efficiently to avoid or delay capital expenditures (Tapes, drives, etc.). | Substantially reduce the cost of overseeing and measuring compliance; serve business needs without unnecessary expenditures. |
| ROI | Use employee time and storage resources, including media, more efficiently. | Improve efficiency of entire storage management system and team. | Improve the return on net assets through increased efficiency of your data protection management systems. |

Bocada Enterprise 5 supports leading vendors and platforms

- Computer Associates BrightStor® ARCserve®
- Hewlett-Packard OpenView Storage Data Protector (OmniBack)
- IBM® Tivoli Storage Manager
- EMC Legato NetWorker®
- Symantec NetBackup™
- Symantec Backup Exec™

Application Specific Support

- Oracle® RMan
- Sun StorageTek® ACSLS Manager™

Technical Requirements

- Windows 2003 Server
- Windows 2000 Server Edition
- Microsoft SQL Server 2000 SP4
- Microsoft SQL Server 2005 SP1
- Apache Tomcat v5.5 running on either Windows or Linux (to take full advantage of the new Web reporting functionality)

About Bocada

Bocada provides automated insight and visibility into data protection processes, enabling IT organizations to confidently analyze data recoverability, predict risk vulnerability and identify opportunities for cost reduction. Based on patented, agent-less technology, Bocada solutions deploy rapidly and scale to meet the demands of the largest multi-vendor data protection environments. More than 400 brand-name customers and partners worldwide trust Bocada for their data protection operations, including Microsoft, AT&T, Sprint, Unilever and Valero Energy.



10500 N.E. 8th Street
Bellevue, WA 98004
Tel: +1 (425) 818-4400
Fax: +1 (425) 818-4455
sales@bocada.com
www.bocada.com